

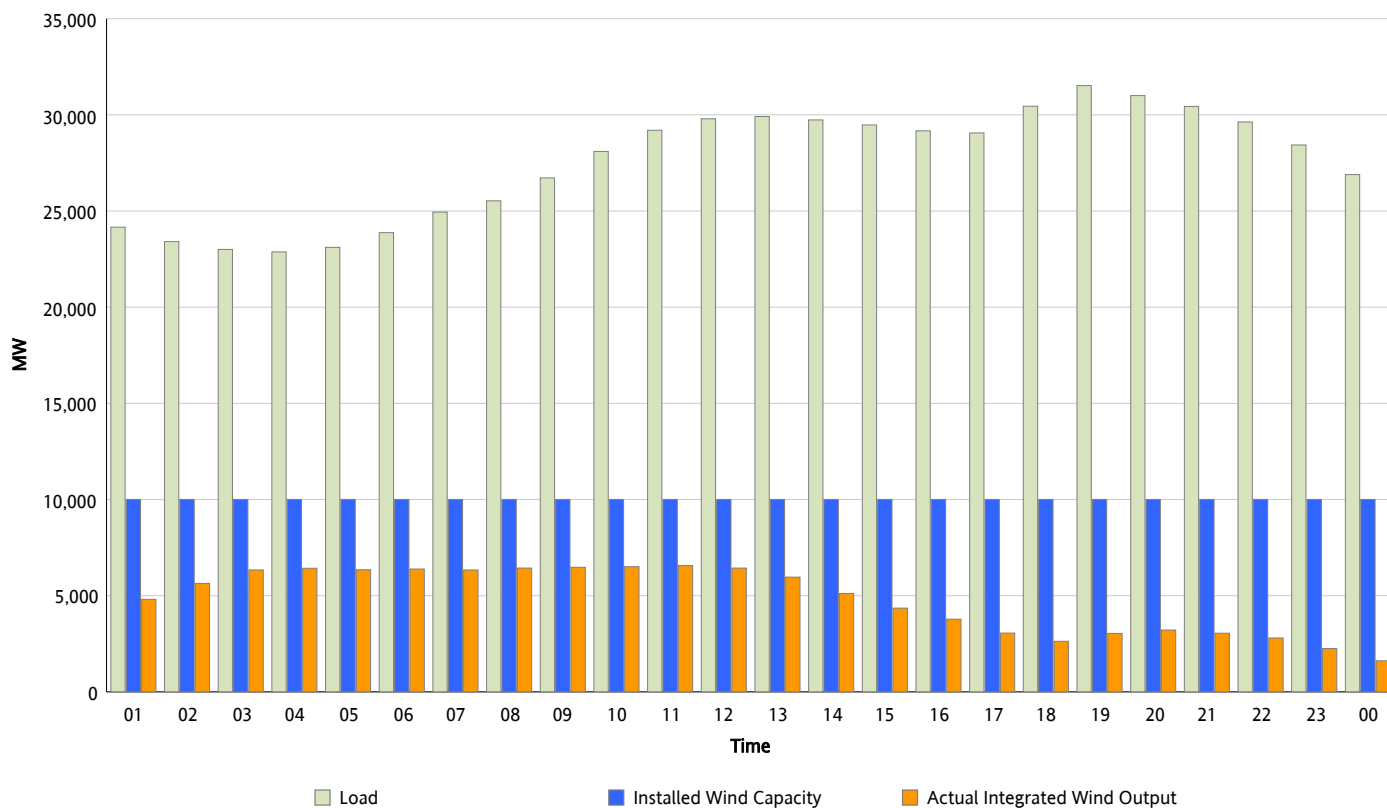


ERCOT Grid Operations

Wind Integration Report : 11/23/2012

Peak Load	31,519 MW
Load Peak Hour (HE)	19
Wind Over Peak	3,038 MW
Wind Record 11/10/12	8,521 MW
Max Wind Value*	6,645 MW
Wind Peak Time	10:47
Wind Integration %	22.56 %

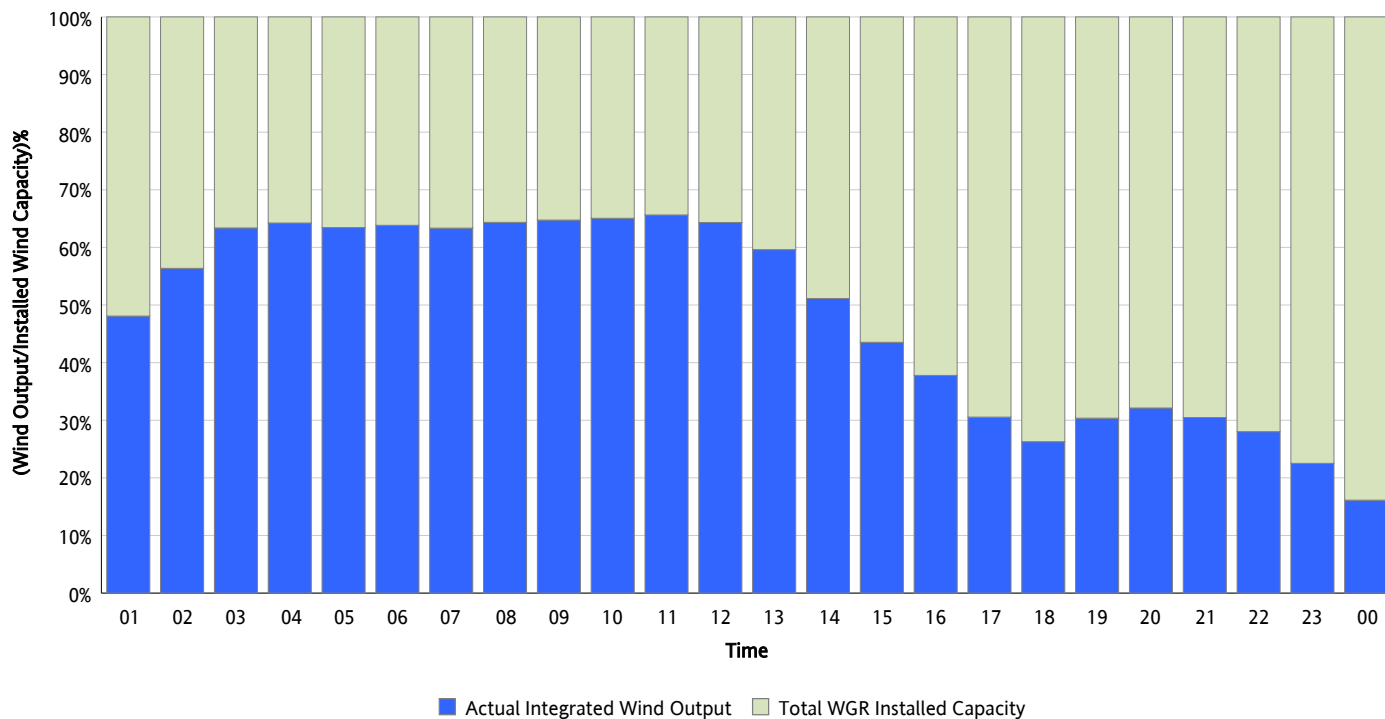
Hourly Average Actual Load vs. Actual Wind Output
11/23/2012



* Wind Record and Wind Max represent instantaneous values and the rest of the values are integrated over the hour

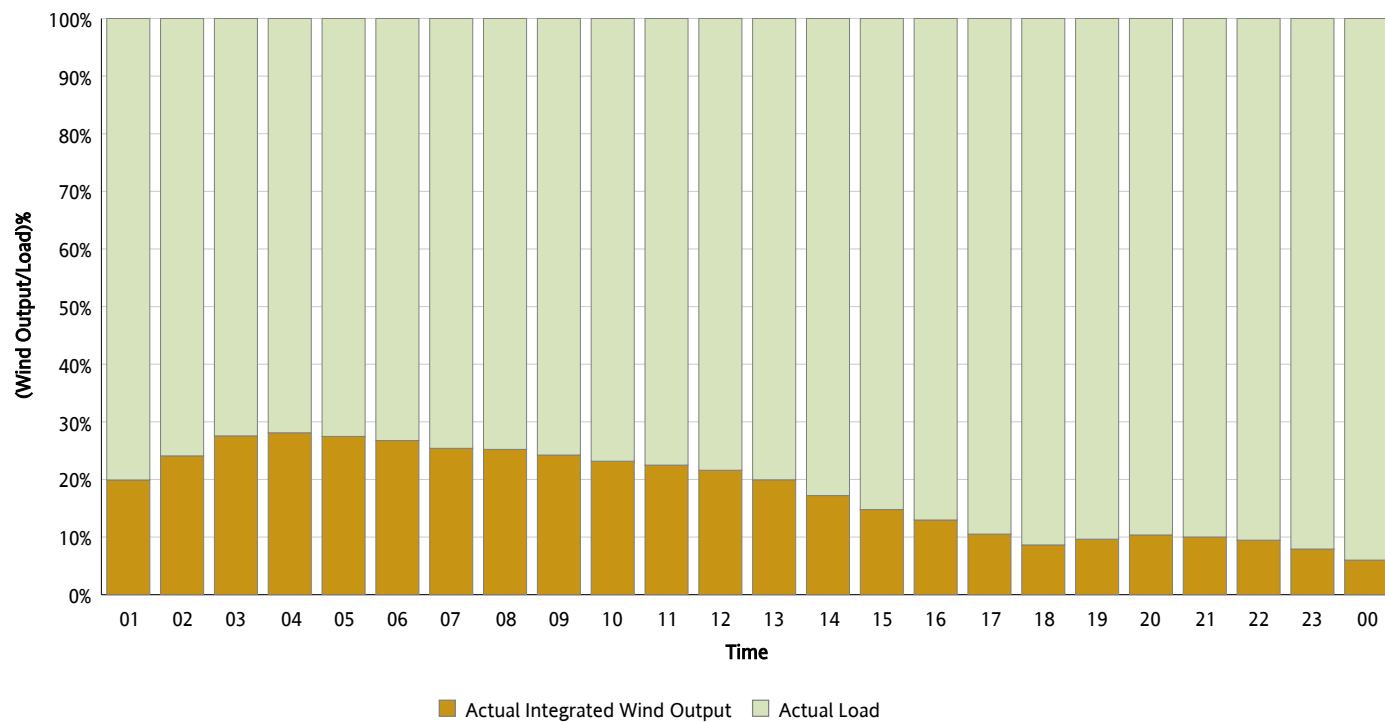
Actual Wind Output as a Percentage of the Total Installed Wind Capacity

11/23/2012



Actual Wind Output as a Percentage of the ERCOT Load

11/23/2012



ERCOT Load vs. Actual Wind Output

11/16/2012 - 11/23/2012

